



**PR**   
PROPERTY

**401, Point Red Midland Road, Luton, Bedfordshire, LU2 0BL**  
**£900 PCM**



- EXCLUSIVE TO PR PROPERTY LETTINGS
- LUXURY MODERN FINISH
- TOWN CENTRE LOCATION
- ONE BEDROOM
- CLOSE TO STATION
- MUST BE VIEWED
- NEWLY REDECORATED
- AVAILABLE NOW

**\*\* Exclusive to PR Property \*\***

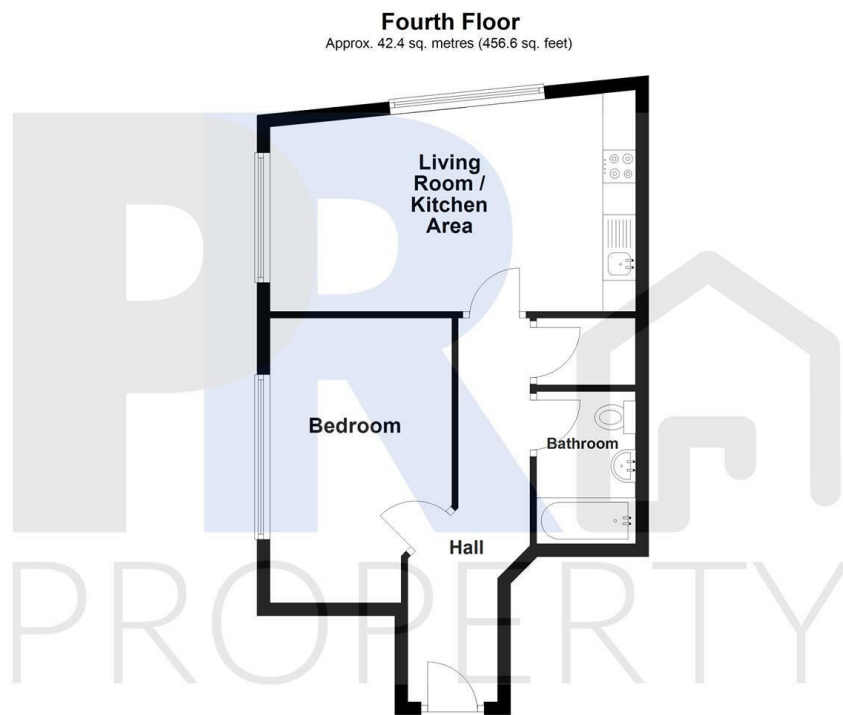
This newly refurbished one bedroom apartment at Point Red, Midland Road, offers stylish modern living right in the heart of Luton. Located just moments from Luton Station, it's a perfect choice for singles, couples or commuters looking for convenience and comfort. Inside, the flat is finished to a high standard, with sleek contemporary fittings and a bright, open plan layout designed for practical everyday living. Ready for immediate move-in, making it ideal for those seeking a seamless start in a prime town center location.

#### ENTRANCE HALL

**LIVING ROOM 19'4" X 10'6" (5.89M X 3.20M)**

**BEDROOM 8'5 X 11'11" (2.57M X 3.63M)**

#### BATHROOM



Energy Efficiency Rating		
	Current	Potential
Very energy efficient - lower running costs		
(92 plus) <b>A</b>		
(81-91) <b>B</b>		
(69-80) <b>C</b>		
(55-68) <b>D</b>		
(39-54) <b>E</b>		
(21-38) <b>F</b>		
(1-20) <b>G</b>		
Not energy efficient - higher running costs		
England & Wales		EU Directive 2002/91/EC